



Triumph Over Cancer Begins Here



Patient Brochure

A Simple Blood Test to Screen for Multiple Cancers

TriNetra™-Triumph is a Multi-Cancer Early Detection (MCED) test to screen for 50 types of cancers to increase the chance of detecting cancer early.

Prescription Use Only

DATAR
CANCER GENETICS

Cancer Facts

Every year about 2 million people are newly diagnosed with various cancers causing more than 600,000 deaths in the US[#]. This translates into about 4 cancer cases being detected and 1 cancer related death every minute[#]. Due to changes in lifestyle as well as other risk factors, these numbers are slated to increase in the future.

[#]<https://seer.cancer.gov/statfacts/html/all.html>



The Effect of Early Detection on Outcomes

Breast Cancer

Late - Stage Survival  31%

Early - Stage Survival  99%

Lung Cancer

Late - Stage Survival  8%

Early - Stage Survival  63%

Colorectum Cancer

Late - Stage Survival  16%

Early - Stage Survival  91%

Prostate Cancer

Late - Stage Survival  34%

Early - Stage Survival  100%

Pancreatic Cancer

Late - Stage Survival  3%

Early - Stage Survival  44%

Stomach Cancer

Late - Stage Survival  7%

Early - Stage Survival  75%

Ovarian Cancer

Late - Stage Survival  31%

Early - Stage Survival  92%

Source

- ASCO Cancer.Net. <https://www.cancer.net/cancer-types>. (10-Jun-2023)
- NCI-SEER. <https://seer.cancer.gov/statfacts/> (10-Jun-2023)

Introducing the TriNetraTM-Triumph Test

- The TriNetraTM-Triumph test evaluates likely presence of 50 types of cancers* through a simple blood draw.
- The TriNetraTM-Triumph is a prescription based test which is indicated for asymptomatic individuals with a higher risk of developing cancer, typically recommended for individuals above the age of 40 years and who do not have prior history of cancer.
- The TriNetraTM-Triumph test should be used in addition to, and not in place of, other cancer screening tests recommended by your healthcare provider.



Early Cancer Detection

Indicates likely presence of many cancers such as pancreatic, ovarian, liver, esophageal, etc., that are not commonly screened for today. Early detection allows earlier intervention**.



Simple Blood Test

It can be included in a typical healthcare visit.



Result

When Circulating Tumor Cells are detected, the results can indicate the possible location of the tumor in the body, allowing your healthcare provider to advise you on next steps.

TriNetraTM-Triumph test indicates likely presence of following 50 types of cancers*:

- Adenocarcinoma (AD): Bile Duct, Breast, Colon, Duodenum, Esophagogastric Junction, Esophagus, Gall Bladder, Ileum, Jejunum, Liver, Lung, Ovary, Pancreas, Prostate, Rectum, Stomach, Thyroid, Uterus, Salivary Duct, Cervix, Kidney.
- Adenosquamous Carcinoma: Esophagus, Gall Bladder, Cervix, Lung.
- Mesothelioma: Pleural, Peritoneal.
- Squamous Cell Carcinoma (SCC): Anorectum, Buccal Mucosa, Cervix, Esophagus, Hard Palate, Larynx, Lip, Lung, Oral Cavity, Paranasal Sinuses, Penis, Pharynx, Pyriform Fossa, Retromolar Trigone, Skin, Soft palate, Tongue, Tonsil, Vulva, Vagina.
- Transitional Cell Carcinoma (TCC): Urinary Bladder, Renal Pelvis, Ureter.

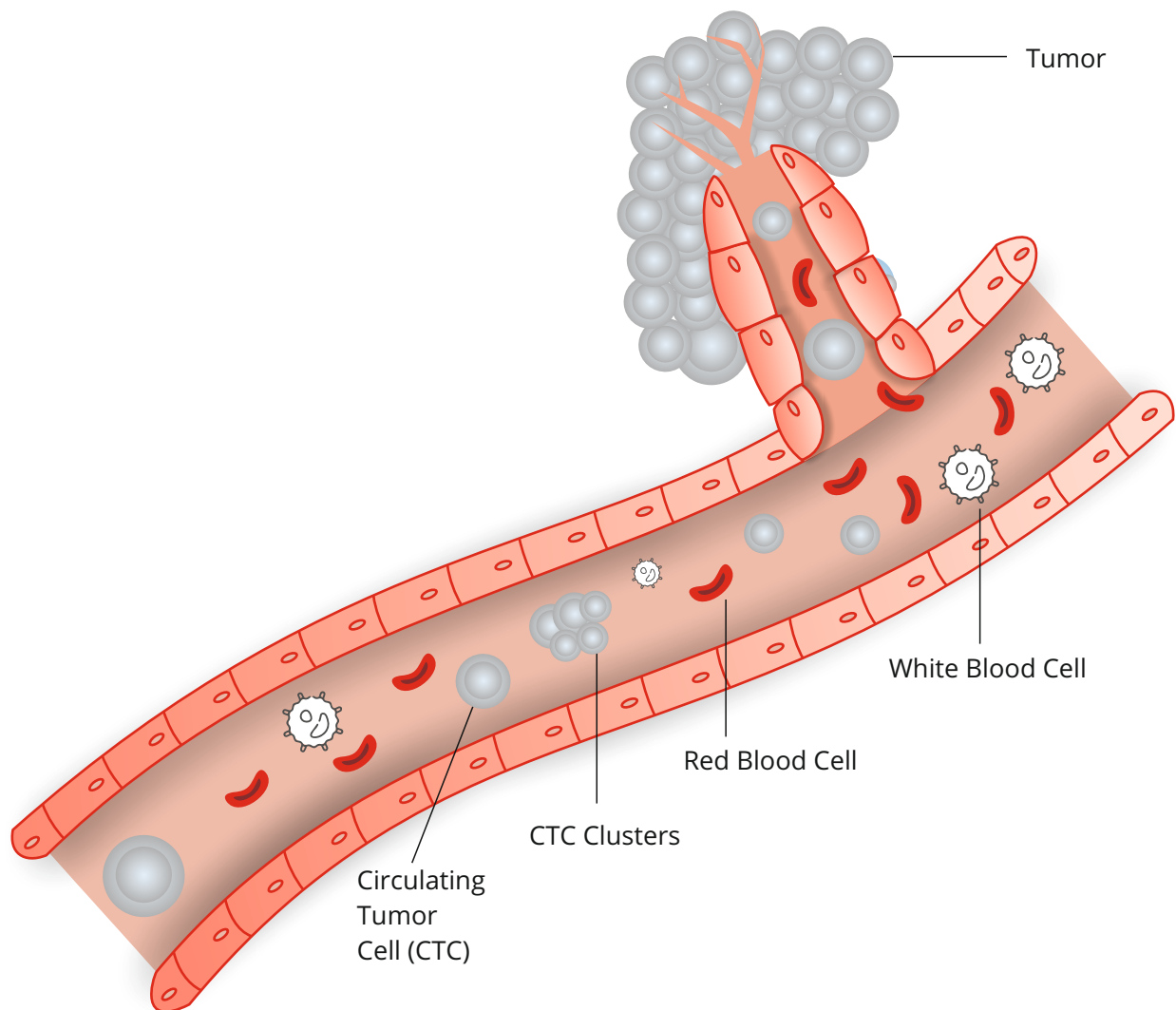
* TriNetraTM-Triumph test is capable of indicating likely presence of solid organ cancers (epithelial cancer subtypes).

**<https://www.cancer.gov/about-cancer/screening/screening-tests>

The Science Behind TriNetra™-Triumph

We published our ground breaking, internationally acclaimed research in 2020, where we reported the discovery of a new 'Cancer Hallmark' i.e., Circulating Ensembles of Tumor Associated Cells, which are common in the blood of patients with cancer and are undetectable in asymptomatic healthy individuals[^]. Circulating Tumor Cells (CTCs) are the essential component of these clusters.

TriNetra™-Triumph is based on this technology and examines blood samples of seemingly healthy individuals for Circulating Tumor Cells (CTCs) and CTC Clusters. Detection of these in blood indicates higher risk of presence of an underlying cancer at the time of testing.



[^]Ranade et al, Hallmark Circulating Tumor-Associated Cell Clusters Signify 230 Times Higher One-Year Cancer Risk. *Cancer Prev Res (Phila)* 1 January 2021; 14 (1): 11–16. <https://doi.org/10.1158/1940-6207.CAPR-20-0322>

[^]Lawrence, R., et al. Circulating tumour cells for early detection of clinically relevant cancer. *Nat Rev Clin Oncol* 20, 487–500 (2023). <https://doi.org/10.1038/s41571-023-00781-y>

Validation

TriNetra™-Triumph is based on data published from large cohort clinical trials on samples from more than 34000 known cancer patients and more than 23000 healthy individuals.



International Journal of Cancer – IJC

<https://doi.org/10.1002/ijc.32815>

Circulating Ensembles of Tumor Associated Cells: A Redoubtable New Systemic Hallmark of Cancer.



American Association for Cancer Research – AACR

<https://doi.org/10.1158/1940-6207.CAPR-20-0322>

Hallmark Circulating Tumor-Associated Cell Clusters Signify 230 Times Higher One-Year Cancer Risk.



ACS Journals – Cancer Cytopathology

<https://doi.org/10.1002/cncy.22366>

Evaluation of Circulating Tumor Cell Clusters for Pan-Cancer Noninvasive Diagnostic Triaging.



Cancers

<https://doi.org/10.3390/cancers14143341>

Accurate Screening for Early-Stage Breast Cancer by Detection and Profiling of Circulating Tumor Cells.



Cancer Medicine

<https://doi.org/10.1002/cam4.5649>

Accurate prostate cancer detection based on enrichment and characterization of prostate cancer specific circulating tumor cells.

Freedom From The Fear of Cancer Begins Here



Request

The Test

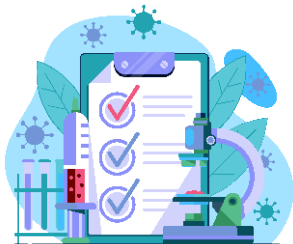
TriNetra™-Triumph test may be ordered through your healthcare provider.



Test

Begins

Fix an appointment for collection of blood draw.



Results

The test result will be available with your healthcare provider within 12 days from receipt of sample.

Important Information

Please note that the results of this test are not to be used as the sole means of diagnosis and are not intended to substitute standard-of-care procedures. A licensed medical practitioner should interpret results. Please also be mindful of the limitations of the test, which include the possibilities of 'false positives' and 'false negatives' for the detection of CTCs due to biological variations beyond the performance spectrum of the test as well as analytical limitations. In case of any questions, please get in touch with your healthcare provider.

Important

This test is not conducted on pregnant women.

Frequently Asked Questions

1. What is the turnaround time of the test?

- ✓ The test result will be usually communicated within 12 working days of sample receipt at our laboratory.

2. How often can the TriNetra™-Triumph test be performed?

- ✓ TriNetra™-Triumph can be performed annually as a screening test.

3. What will the report tell me?

- ✓ The report will tell you if CTCs were detected (indicating a higher risk of the presence of cancer) or CTCs were not detected (indicating a lower risk of the presence of cancer) in the submitted sample. When Circulating Tumor Cells are detected, the results can indicate the possible location of the tumor in the body, allowing your healthcare provider to advise your next steps.

4. What are the next steps for those with higher risk of presence of cancer?

- ✓ Individuals with these findings are advised consultation with their physician for appropriate guidance and additional standard of care workup as may be advised.

5. What are the next steps for those with a lower risk of presence of cancer?

- ✓ TriNetra™-Triumph test may be repeated annually and the individual is advised to consult a physician if further guidance is required.

6. Is this a genetic predisposition test?

- ✓ No. This test detects presence of intact Circulating Tumor Cells (CTCs) in peripheral blood of the individual.

7. Does TriNetra™-Triumph replace conventional cancer screening like colonoscopy and mammography?

- ✓ TriNetra™-Triumph is not intended to be and should not be considered as a replacement for any Standard of Care screening tests.


8. What are CTCs?

- ✓ These are the tumor cells which are circulating in blood when shed from the cancer in the body.

For further questions and clarification please visit trinetra360.com

Contact us:

response.us@datarpgx.com

 trinetra360.com

DATAR CANCER GENETICS

Essential Safety Information

The TriNetra™-Triumph test is advised for use in adults with a higher risk of developing cancer, typically recommended for individuals above the age of 40 years and who do not have prior history of cancer. The TriNetra™-Triumph test should be used in addition to other cancer screening procedures advised by a healthcare professional. The objective of using TriNetra™-Triumph is to identify cancer footprints i.e. CTCs and identify the probable organ / location that may be affected. TriNetra™-Triumph should not be used by pregnant women. TriNetra™-Triumph should never be used as the sole means of diagnosis and the results must always be corroborated by Standard of Care methodologies undertaken through a duly qualified and authorized medical professional.

A healthcare professional should interpret the results in light of the patient's medical history, physical symptoms, and clinical indicators. A "No Circulating Tumor Cells Detected" test result merely signifies a reduced risk of presence of cancer but it however does not definitively exclude the possibility of cancer. A "Circulating Tumor Cells Detected" test result must necessarily be confirmed by independent diagnostic evaluation using medically accepted Standard of Care techniques (like imaging, for example) and a positive result does not confirm the existence of cancer.

If additional testing does not confirm the presence of cancer, it may indicate that cancer is not currently present (the TriNetra™-Triumph test is 'false-positive'), and 'watchful waiting' is advised subject to the opinion of the individual's prescribing physician. It is clarified that owing to the diverse biological behavior of cancer and/or the technical limitations of the performance of the test, it is possible for the test findings to be both false-positive (a biological footprint suggestive of cancer is found when cancer is not present) and false-negative (a biological footprint suggestive of cancer is not identified when cancer is present). Prescription Required.

Information from the laboratory about the test

The Clinical Laboratory Improvement Amendments of 1988 (CLIA) has certified Datar Cancer Genetics clinical laboratory in Guildford, UK, and the College of American Pathologists (CAP) has granted it accreditation. The TriNetra™-Triumph test was developed by Datar Cancer Genetics, and the laboratory has determined the performance parameters of the test. The Food and Drug Administration (US-FDA) has neither approved, endorsed, nor cleared the TriNetra™-Triumph test. High-complexity testing is regulated under the CLIA regime in the Company's clinical laboratory. The TriNetra™-Triumph test is designed to be used in a clinical setting only.